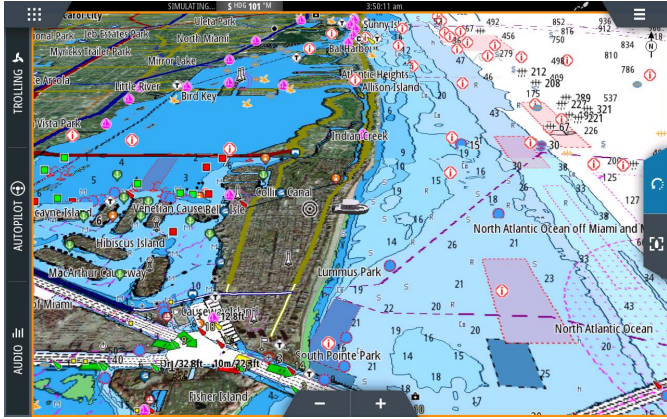


## C-MAP Free Chart Campaign

Your Choice of a Free C-MAP Insight HD Inland or C-MAP MAX-N+ Wide Coastal Chart -- A \$299 Retail Value -- With a Qualifying Vulcan or Zeus<sup>3</sup> purchase.



To qualify for and receive your FREE chart card, purchase one or more of the qualifying products between September 17 and December 31, 2018 in the USA, Canada or Puerto Rico.

### Mail-In Rebate Form

Complete this form and mail it with a dated copy of your register receipt and UPC or EAN barcode, in a single envelope to the address provided below **by January 31, 2019**. If the qualifying product(s) was acquired with the purchase of a new boat, provide a copy of the Bill of Sale itemizing the qualified product(s) installed, as proof of purchase. Complete this form and mail it, with a dated copy. Make a copy of all rebate submission materials for future reference. If you have not received your card after 8 - 10 weeks, please call: 1-844-628-7925 or visit [www.navicorewards.com](http://www.navicorewards.com).

#### Mailing Address

Send this form with your required documents to:

**B&G**  
 Offer#18-53165  
 PO BOX 540012  
 El Paso, TX 88554-0012

#### Required Documents

- SALES RECEIPT**  
 Enclose the original or a legible copy of your cash register receipt showing purchase made within valid offer dates.
- UPC LABEL**  
 Enclose the original package UPC (s) from each product that you are submitting. Copies or reproductions will not be accepted.

#### QUALIFYING PRODUCTS

- Zeus<sup>3</sup> 16 All Models
- Zeus<sup>3</sup> 12 All Models
- Zeus<sup>3</sup> 9 all Models
- Zeus<sup>3</sup> 7 All Models
- Vulcan12 All Models
- Vulcan 9 All Models
- Vulcan 7R All Models

Visit [www.bandg.com/offers/](http://www.bandg.com/offers/)



#### Check your preferred mapping product

- C-MAP MAX-N+ W: USA EAST COASTAL & BAHAMAS
- C-MAP MAX-N+ W: USA WEST COASTAL & HAWAII
- C-MAP MAX-N+ C: USA CENTRAL COASTAL & CARIBBEAN
- C-MAP LAKE INSIGHT HD – INLAND WEST US
- C-MAP LAKE INSIGHT HD – INLAND NORTH EAST US
- C-MAP LAKE INSIGHT HD – INLAND SOUTH EAST US
- C-MAP LAKE INSIGHT HD – INLAND NORTH CENTRAL US
- C-MAP LAKE INSIGHT HD – INLAND SOUTH CENTRAL US

For chart coverage details, visit [www.c-map.com](http://www.c-map.com)



FIRST NAME

»

LAST NAME

»

PHONE

»

EMAIL (To notify you of the status of your redemption request only)

ADDRESS

»

APT. #

»

STATE

»

ZIP CODE

»

CITY

»

COUNTRY

Yes, B&G may contact me, with additional information on this and other promotions and products.

Your product receipt or invoice must show that you purchased the eligible products between 9/17/2018 and 12/31/18. Hand-written invoices or sales receipts will not be accepted. The envelope containing your materials must be postmarked no later than 01/31/19. Proof of mailing does not constitute proof of delivery. B&G is not responsible for lost, late, illegible, misdirected or postage due mail. Materials submitted become property of B&G and will not be returned. If terms and conditions are not met, a mapping card will not be sent. Keep copies of all materials submitted for your records. This offer is not valid for retailers or wholesalers. Requests from groups, P.O. Boxes, or organizations will not be honored. Offer limited to three rewards per household. Offer cannot be combined with any other B&G offer. Offer valid only in the U.S.A., Canada & Puerto Rico. Void where prohibited, taxed or restricted by law. Fraudulent submission of multiple requests could result in federal prosecution under the U.S. Mail Fraud Statutes (18 USC, Sec on 1341 and 1342). Please allow 8-10 weeks, after receipt of reward request, for processing. If you do not receive your mapping product within 8-10 weeks, you must call 1-844-628-7925 or visit [www.navicorewards.com](http://www.navicorewards.com) no later than 04/30/19 or all rights hereunder will expire. This offer is subject to change or cancellation, at any time, without notice.