

TB-97096 / October 4, 2017

Zeus³ software update

Product:

Product Description:

Zeus³

Software Version:

Zeus³

2.0 - .57.2.69-Standard-1.upd

Effective Date:

October 4, 2017

Inspect/Update Current Inventory:

YES

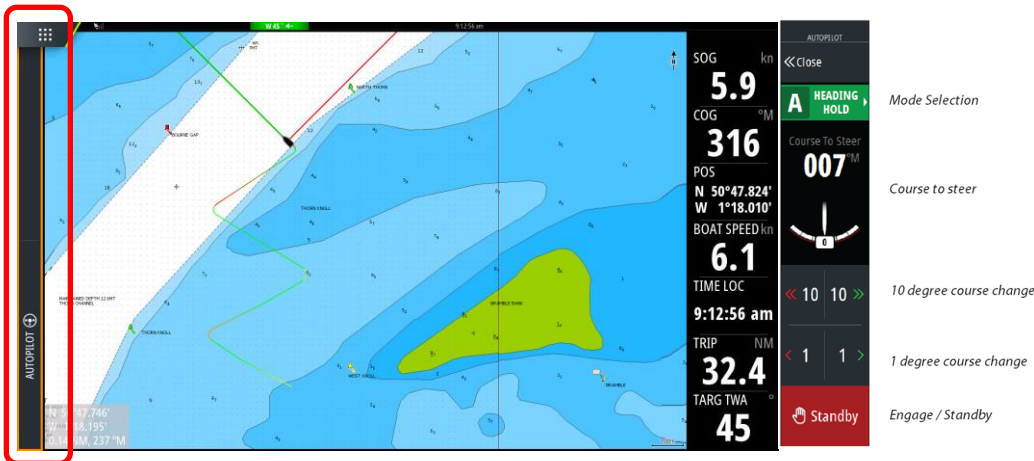
B&G® is pleased to announce new software for the Zeus³ range of multifunction displays. This new release incorporates some great new features and improvements including:

- New Control bar User Interface
- Port / Starboard Waypoint Rounding Indication
- Coloured Tracks based on data
- HeatMap overlay on the chart (Water Temperature)
- New Feature Unlock. Enhanced features available from the GoFree shop.

New Features

New Control Bar UI

The Control Bar includes autopilot and audio server controls. The autopilot and audio server tiles have been removed from the instrument bar as both are now active on the retractable control bar on the left side of the screen – making for a cleaner, easier user experience. Autopilot controls are also available on any dedicated autopilot screen.



Control Bar – touch to activate options

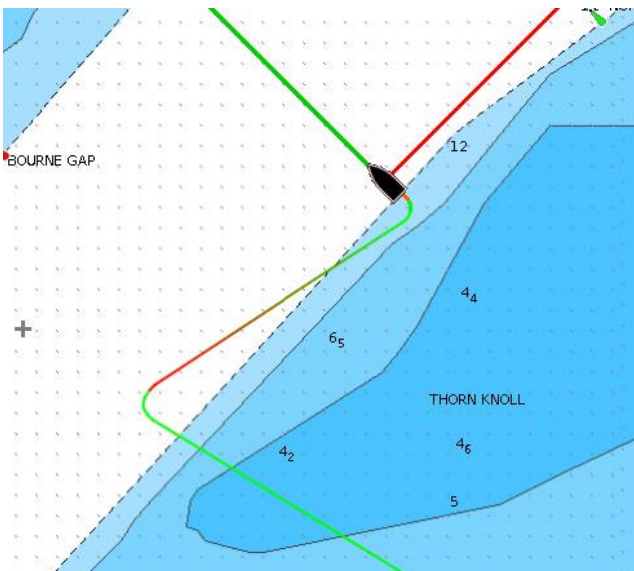
Autopilot Control Bar (showing Heading Hold Mode)



Audio Control Bar

Colour tracks

A new color track mode enables the user to set specific parameters (e.g. speed or depth) which are then displayed using colored tracks on the chart screen. The color scale will use red to show the lowest value and green for the highest with the mean value shown in yellow. The color of the track ranges from red through yellow to green, indicating the value on the track in relation to the lowest and highest values.



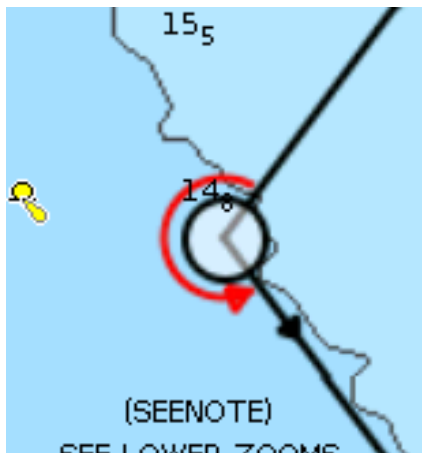
The user can fix these parameters rather than using the automated lowest/highest scale. For example: Boat Speed - the user could set the range from 4-12 knots, the scale would then automatically adjust the the color gradient.

The following parameters can be indicated on the chart using color tracks:

- 1) Speed over Ground
- 2) Speed Through Water
- 3) True Wind Speed
- 4) Apparent Wind Speed
- 5) VMG
- 6) Performance % (% Polar achievement)

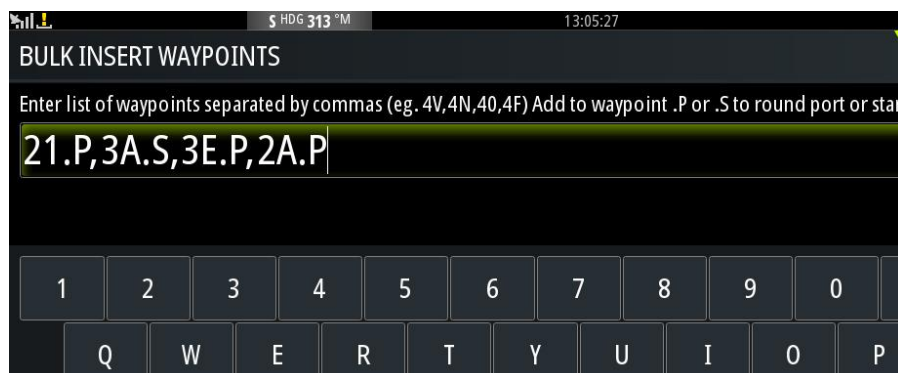
Enable Color Tracks using the option in the side menu under Chart Options. Once turned on, the unit provides the ability to set the data parameters.

Waypoint Rounding Indicators



To enable quick and easy identification of mark rounding directions when racing, the latest update allows users to set a specific course as a race, which then automatically applies mark rounding directions based on the relative angle between legs of the course. These angles can be edited by the user to match those provided by the race committee, if different.

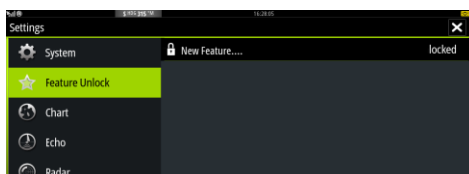
In the previous software update, users were able to bulk upload a course simply by entering the first few letters of each waypoint name, separated by a comma to enter the course at one time. This latest software update enables the user to add the mark rounding direction. Users accomplish this by adding a “.P” or “.S” when adding the waypoints, which will enable the display of the waypoint indicator direction. If waypoint directions are not manually entered then the unit will estimate the rounding based on relative angles between legs.



Bulk Waypoint insert for quick route entry, including Port / Starboard roundings

Feature Unlock

Additional functionality and features can now be purchased and unlocked on the Multifunction Display using the new Feature Unlock menu item under Settings. (This is only visible when a compatible device is connected)



Fixes

- An issue with the Rotary knob push facility when used to toggle between settings such as Gain on Sonar and Radar has been fixed
- East/West identifier missing from WPTs when co-ordinate units are set to Degrees / Minutes / Seconds
- An issue with a false High voltage alarm has been resolved
- A power control fix has been implemented to work with Fusion MS-BB300 radios.
- Screenshot files are now named using the system Date and Time. The new file name format is "Screenshot_2017-07-06_05.01.12.png". The previous file-naming format was "shot001.png."

The new versions are available to download from www.bandg.com

Known Issue

A late issue has been identified in this version. The Tide search feature is returning no stations when the MFD is set a language other than English. We are aware of the issue and it will be fixed in the next software release, due later in the year.

For More Information:

U.S. Based Resellers Technical and Order Support: (800) 324-4737

Canada Based Resellers Technical Support: (855) 361-1564

You may also send any inquiries via email to the addresses listed below, according to your sales-group classification:

- OEM/Boatbuilder – oem-bb@navico.com
- International/Latin America – international@navico.com
- National Retail – retail@navico.com
- Dealers/Distributors – orders@navico.com