

TB-131247 / June 17, 2020

V5035 – AIS CLASS-A

Product:	000-12249-001
Product Description:	AIS V5035 CLASS A TRANSCEIVER
Software Version:	v1.0.6.49
Effective Date:	08-AUG-2018
Inspect/Update Current Inventory:	Yes

V5035 AIS Software Update

This is an update from our previous v1.0.6.46 firmware release.

This technical bulletin incorporates retrospective production releases applied to production units as follows:

v1.0.6.49 (released to production units since AUG 2018):

- Fixed following bug: If setting MMSI or IMO number via MKD, the MKD may reset after such setting.
- New feature: add “Ship type 57 setting via MKD” (requested by Navico USA)
- Fixed NMEA 2000® fields bugs as below:
 - **PGN 129794 AIS Class A Static and Voyage Related Data**
 - Field 11 Position Reference Point aft of Ship's Bow
 - Field 12 Estimated Date of Arrival
 - **PGN 129040 AIS Class B Extended Position Report**
 - Field 21 Position Reference Point aft of Ship's Bow
 - **PGN 129041 AIS Aids to Navigation (AtoN) Report (Msg 21)**
 - Field 4 Longitude
 - Field 5 Latitude
 - Field 12 Position Reference Point from True North facing Structure Edge/Radius
 - Field 23 Aid to Navigation (AtoN) Name
 - **PGN 129810 AIS Class B “CS” Static Data Report, Part B**
 - Field 10 Reference Point Position Aft of Bow
- Improved NMEA 2000 received packets performance.
- Fixed in heading calculation in the second and third quadrant (related to issues with PGN129794 and 129810).

- After finishing the firmware upgrade process, the V5035 can be turned off by the power button (previously could only be turned off by unplugging the power cable).
- When V5035 was turning off and entering power-off stage (but not yet fully power off), and if the power-button is pressed (turning on) again at that time, the V5035 will alert user with continuous long-beep tone to warn user that the device is still in powering-off-stage and cannot be turn-on at that moment. User had to wait until the long-beep tone ends if they want to turn on the device again.

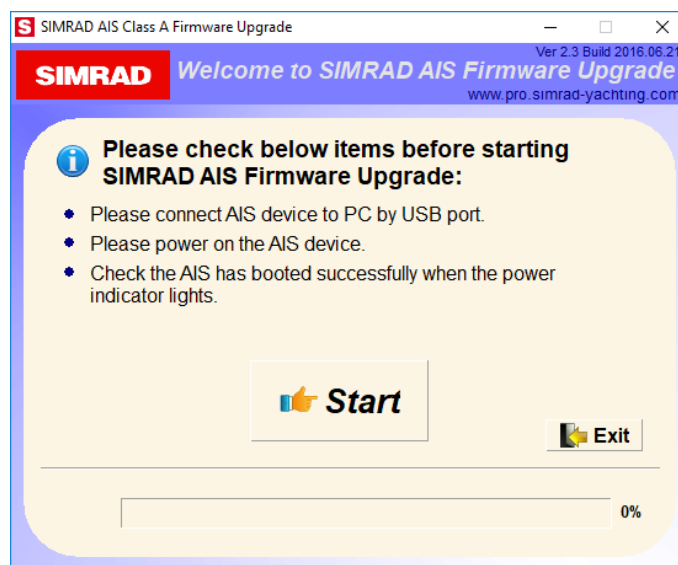
v1.0.6.47 (released to production units since OCT 2016):

- Change VSWR SETTING (to avoid false alarm of short-cable-length-installation):
 - Available Threshold Range: changed to 0.75~1.25;
 - VSWR Threshold: changed to 1.00 as factory default.
- Change Rx malfunction detection criteria (to avoid false alarm of Rx Ch Malfunction):
 - Increase synthesizer-lock-detection time from 100 ms to 1 minute;
 - Add additional condition (to decide channel-no-receiving) as Rx malfunction criteria.
- Bug fixed: the Color-bar may be skipped occasionally in start-up BIIT during production test.

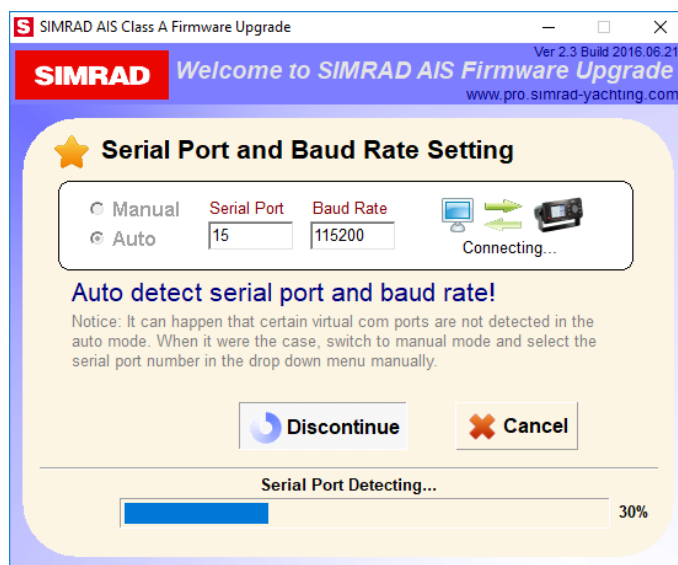
Note: the last V5035 TB was available for v1.0.6.46

Upgrade Instructions:

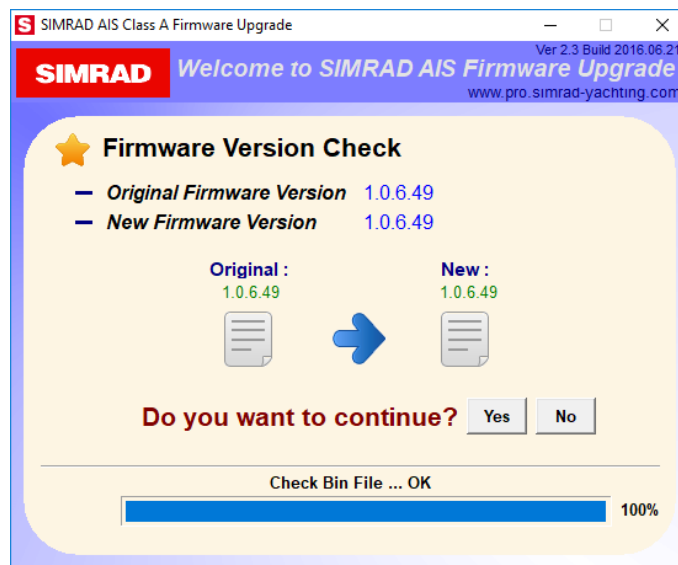
1. Download the V5035 software update from Simrad-Commercial web site
2. Unzip the software to a folder on the PC. Ensure there is a 'Bin' folder created in the same folder as the updater (V5035_FirmwareUpgrade.exe).
3. Connect the V5035 to the PC using a USB cable
4. Run the updater, then select **Start**:



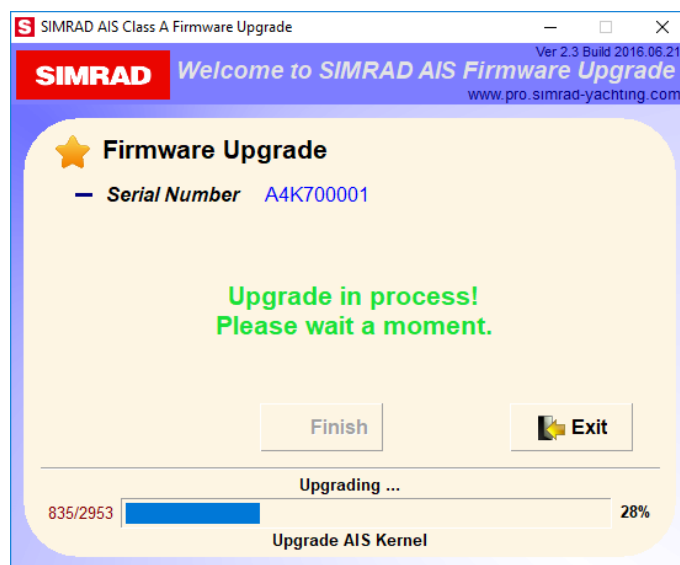
5. Select **Auto** then select **Continue** to allow the updater to 'find' the V5035.



6. The current SW version will be displayed. Select Yes to continue with the update.



7. The upgrade will commence.



8. Restart the unit once the update has completed.



For more information:

Order Support: (800) 324-4737 x4702

Technical support: (918) 438-8668

You may also send any inquiries via email to the addresses listed below, according to your sales-group classification:

- orders@navico.com
- cmd.service@navico.com