



TB-135883 / May 20, 2020

GO Series Software update 20.0

Product: GO Series
Product Description: GO7 XSR, GO9 XSE, GO12 XSE
Software Version: GO7_XSR_GO12_XSE-20.0-63.1.291-Standard-1.upd
GO9_XSE-20.0-63.1.291-Standard-1.upd

Effective Date: May 20th 2020
Inspect/Update Current Inventory: No

We are pleased to announce the release of 20.0 software for Simrad GO series displays.

This release is only for GO5 XSE, GO7 XSR, GO9 XSE and GO12 XSE.

The new software, release notes and manual addendum are available from the [Simrad-yachting](http://www.simrad-yachting.com) website or downloaded directly to the MFD when connected to the internet.

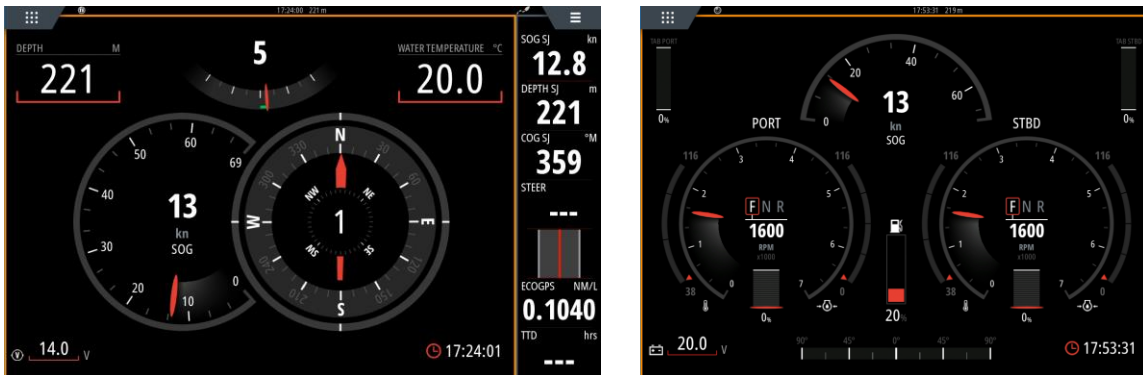
New Features

New feature description	GO12 XSE	GO9 XSE	GO7 XSR	GO5 XSE
New Instrument app	✓	✓	✓	✓
Dual mode Wi-Fi	✓	✓	✓	✓
Power-Pole [®] control with battery management	✓	✓	✓	✓
Simrad mobile companion app: Product registration	✓	✓	✓	✓
Backup & Synchronize waypoints, routes and tracks	✓	✓	✓	✓
Mercury [®] VesselView [®] Link: Update over NMEA 2000	✓	✓	✓	✓
Mercury engines: Support for up to six engines	✓	✓	✓	✓
Mercury engines: Autopilot features unlocked	✓	✓	✓	✓
Naviop [™] performance improvement's	✓	x	✓	x
Control Lowrance GHOST and Rhodan [®] Trolling motors	✓	✓	✓	✓

New Instrument app

The Instruments “App” now available on Simrad GO displays has replaced the former Instruments page.

The new look and feel gives a modern aesthetic to match the style of the rest of the system.



Dual mode Wi-Fi

- The GO series MFDs can now connect to the internet AND connect to a mobile device to perform functions such as screen mirroring via the Link App or registration via the Simrad companion app at the same time.
- Previously, there were two WiFi modes and users would switch between client OR access point.
- There are new menu items under Settings > Wireless which makes connecting to the Internet and connecting to mobile devices much easier.

Simrad mobile companion app: Product registration

- The new Simrad companion app available for Android and iOS devices works with compatible Simrad multifunction displays for an even richer experience – providing:
 - Device registration
 - Manual downloads
 - Mobile charting app
 - Passage planning
 - Ability to back up waypoints routes and tracks that can be accessed both on and off the water.

Backup & synchronize data to cloud passage planner

- C-MAP offers online and app-based detailed nautical charts in a clear and sleek design, providing all the information you need to navigate or fish at anytime, anywhere. C-MAP covers seas and lakes worldwide and is part of the new Simrad companion app.
- Synchronize user-created data such as routes, waypoints and tracks between the Simrad Companion App, or the C-MAP online chart and compatible MFDs.
- The former C-MAP icon on the system control menu has changed to “Synchronize my data.”

Naviop™ performance improvements

- Vessels with a compatible Naviop system, Naviop will now run natively as part of the operating system on the GO7 XSR or GO12 XSE, providing a faster and more responsive user experience. It is easier to use, can now be displayed full screen or as part of a split screen, and will be included on the display’s homepage.

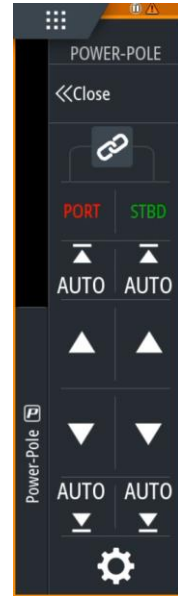
Ghost Trolling Motor Support

- When a Ghost trolling motor is connected there is now a sidebar for all controls
 - Anchor at current location, on a waypoint or at the cursor
 - Heading lock: with heading adjustment
 - Speed control
 - Navigation control of routes

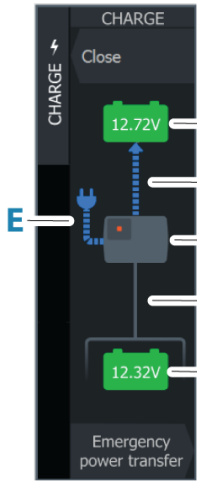
Power-Pole® Control

Simrad GO multifunction displays can now control Power-Pole shallow water anchor systems. Communication to the Power-Pole system is via Bluetooth®.

When connected to a Power-Pole system there is a new Control Bar that provides access to controls for each connected power pole.



Power-Pole Charge



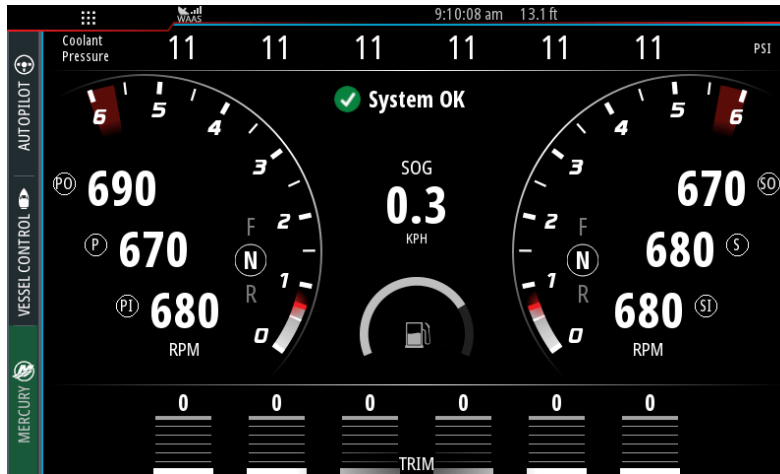
- The Power-Pole battery charge management system displays battery status information.

- A) Engine battery/batteries
- B) Battery connections
- C) Power-Pole charge module
- D) Auxiliary battery/batteries
- E) Charge module AC power source connection

For installation, wiring and setup information, refer to the Power-Pole documentation supplied with the Charge module.

Support for up to six Mercury® Engines

Up to six Mercury engines are now supported. Previously, a maximum of four-engines was supported. For more information on 5-6 engine support please contact <https://www.mercurymarine.com>.



Mercury® VesselView® Link update over NMEA 2000®

- Mercury VesselView Link modules can now be updated via a NMEA 2000 network from a Simrad MFD, removing the need to install an updated SD card directly into the black box.

Mercury® autopilot features unlocked

- Mercury autopilot Drifthook, Bowhook, and Heading Adjust features are now unlocked and no longer require purchase

Fixes & Improvements

- Added NMEA 2000® MOB PGN 127233
- Fix for missing sea temperature on some transducers
- Includes an alteration to the internal GPS, following some reports from the field that the MFDs are creating too many track points when the source for position is an internal GPS
- Resolves issue with AIS own vessel icon not aligning to the AIS Vessel orientation setting under Settings > Vessels
- New MFDs made after January 2020 will no longer be able to install software that was released before the date of the units manufacture. The manufacture date located on the About screen called the “Factory software date stamp”
- If a Rhodan® trolling motor is connected to the NMEA 2000 network, the trolling motor is supported and can be controlled from the MFD. For more information about this trolling motor, refer to rhodanmarine.com.
- General performance and stability enhancements
- Thermal logging in the background has been added to assist in service matters
- New progress bar is visible when calculating Auto Routing
- Includes fix to prevent the fuel remaining source from changing after a power cycle
- Resolves issue with some units not remembering Navionics® SonarChart™ Live settings after a power cycle

For More Information:

U.S. Based Resellers Technical and Order Support: (800) 324-4737
Canada Based Resellers Technical Support: (855) 361-1564

You may also send any inquiries via email to the addresses listed below, according to your sales-group classification:

- OEM/Boatbuilder – oem-bb@navico.com
- International/Latin America – international@navico.com
- National Retail – retail@navico.com
- Dealers/Distributors – orders@navico.com