

C-MAP Announces New Features and Enhancements to Lake HD Charts

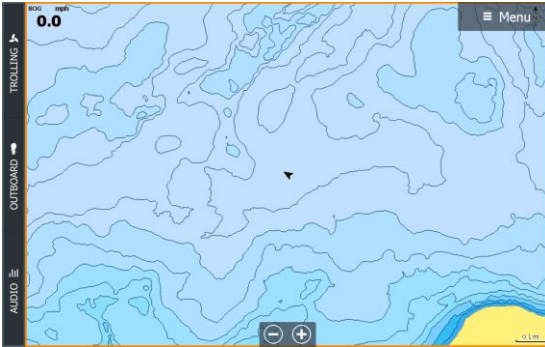
We are pleased to announce significant enhancements to C-MAP MAX-N+ Lake HD chart cards, including new features and improvements to contours, depth shading, POIs and more. In addition to the new features and enhancements, each Lake HD chart includes: C-MAP Vector Charts, Satellite Overlay, Genesis Social Layer, Easy Routing and Custom Depth Shading.

New Features

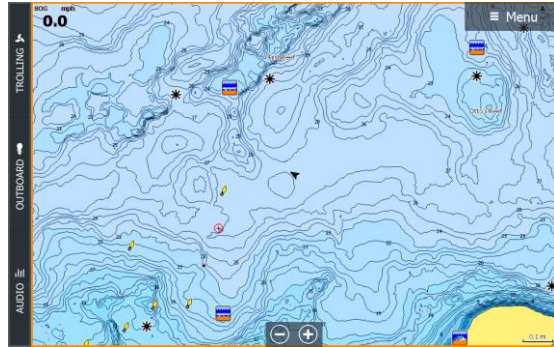
- Presentation improvements will display chart content more consistently throughout all zoom levels
- Improved Lowrance presentation icons and points of interest (marinas, boat ramps, gas stations, etc.)
- Refactored contour lines resulting in more coverage with high-definition 1-foot contours
- Updated depth shading
- Redesigned structure markers (roadbeds, foundations, etc.)
- Low zoom-level improvements include new icons for points of interest -- both on land and water
- Improved boat ramps and gas stations, building foundations, submerged roadbeds and channel lines are redrawn in a new color.

C-MAP MAX-N+ Lake HD		
Part Number	Description	MRP
M-NA-Y071-MS	US LAKES: WEST	\$ 169.00
M-NA-Y072-MS	US LAKES: NORTH CENTRAL	\$ 169.00
M-NA-Y073-MS	US LAKES: NORTH EAST	\$ 169.00
M-NA-Y074-MS	US LAKES: SOUTH EAST	\$ 169.00
M-NA-Y075-MS	US LAKES: SOUTH CENTRAL	\$ 169.00

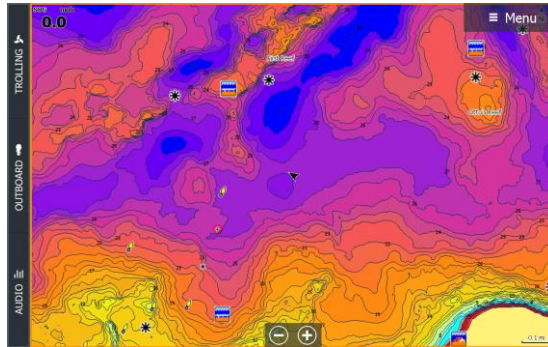
Mille Lacs Lake



Previous Chart

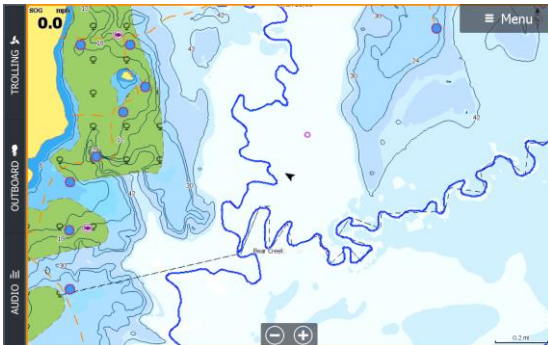


Enhanced Chart with Improved Contours



Enhanced Chart with Improved Custom Depth Shading

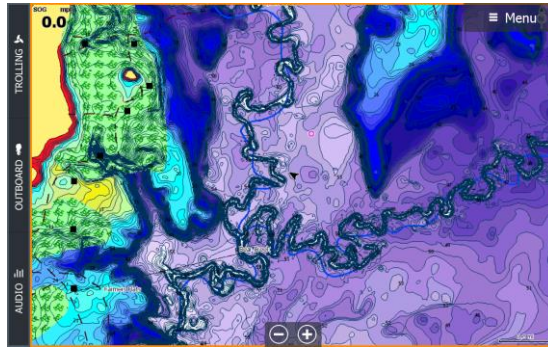
Sam Rayburn Reservoir



Previous Chart



Enhanced Chart with Improved Contours



Enhanced Chart with Improved Custom
Depth Shading

For updated product images featuring C-MAP MAX-N+ Lake HD chart cards, please go to [Navico Asset Bank](#), and search “Lake HD.”

Please note: Navico Customers with their newly created single sign-on username and password may also obtain pricing information from the new Navico Customer Portal: <https://customerportal.navico.com/>.

If you need assistance with your username and/or login for the Navico Customer Portal, please contact your Customer Operations Specialist.

For More Information:

U.S. Based Resellers Technical and Order Support: (800) 324-4737
Canada Based Resellers Technical Support: (855) 361-1564

You may also send any inquiries via email to the addresses listed below, according to your sales-group classification:

- OEM/Boatbuilder – oem-bb@navico.com
- International/Latin America – international@navico.com
- National Retail – retail@navico.com
- Dealers/Distributors – orders@navico.com