

Technical Bulletin



TB-93328 / April 26, 2017

Product:	NSS evo2, NSS evo3, NSO evo2, S2009, S2016
Product Description:	
Software Version:	56.1.142 or greater
Effective Date:	7th April 2017
Inspect/Update Current Inventory:	No

Enable Multi-Network Echosounder Features

This bulletin details the steps that are required to enable the new multi-network sounder feature after upgrading from software version 55.1.74 to 56.x.xxx.

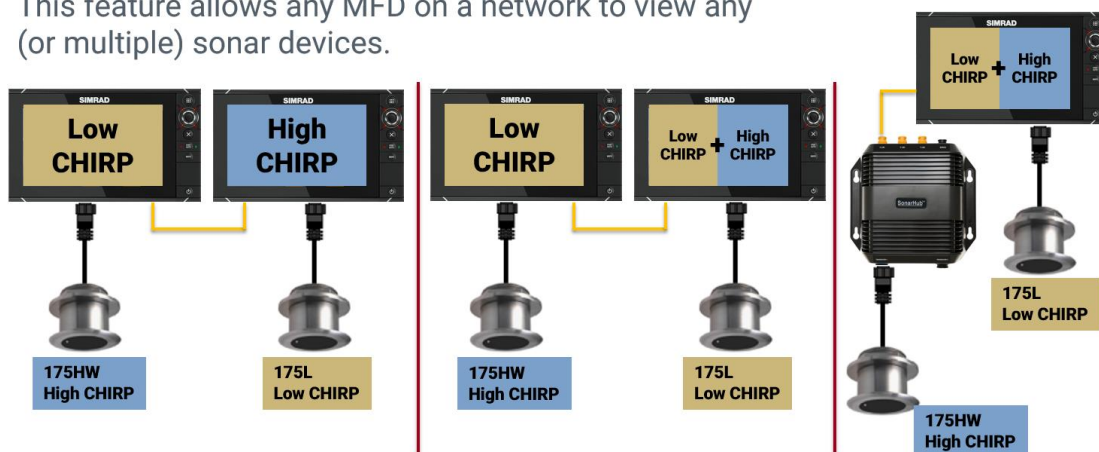
What are the New Multi-Network Echosounder Features?

The new features, introduced in software version 56.1.142, provide greater flexibility in how echosounder modules can be installed-and operated onboard a vessel.

Multi-network echosounder allows for more than one echosounder module on the Ethernet network to be displayed and operated simultaneously from any MFD via a split page.

Previously, only one sonar source could be viewed/operated at any one time. i.e.; if the source was changed from one sonar module to another, all MFDs on the network would use that source. This is now called “**Legacy Mode”

This feature allows any MFD on a network to view any (or multiple) sonar devices.



The new multi-network feature now allows any MFD to display any *compatible echosounder source.

*Compatible echosounders include: Simrad® NSS evo2, NSS evo3, S2009, S2016, SonarHub™,

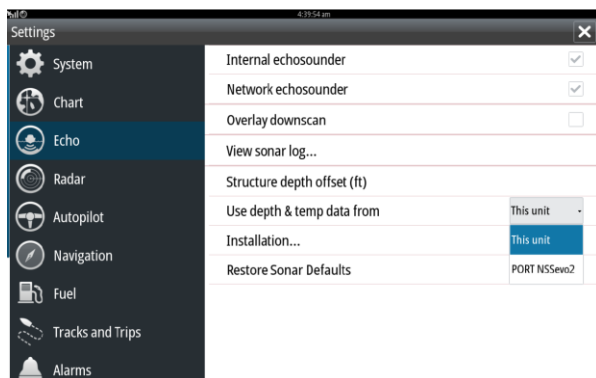
StructureScan® 3D and S5100 with software version 56.x.xxx or greater.

**A network will automatically revert to Legacy mode when:

- There is a legacy product, BSM-1, BSM-2 or BSM-3 on the network
- If there is a NSS Sport or NSE on the network
- If any compatible network echosounder module has software version 55.x.xxx or lower.

After upgrading the software of all compatible echosounder modules or MFDs to 56.x.xxx or greater, the system by default will be in “Legacy mode”, and the following procedure will need to be followed to enable the Multi-network echosounder feature.

1. Make sure all MFDs and echosounder modules are powered on and have software version 56.x.xxx or greater.
2. On a MFD, go to **HOME > Settings > Echo**.
3. Press **Restore Sonar Defaults**. (Note: there is no feedback when this is pressed).
4. Wait for at least 30 seconds.
5. Power down **ALL** MFDs/sonar modules and remove power from the entire system.
6. Wait for at least 30 seconds, then re-apply power to the system and turn on all MFDs.
7. The network should now be able to support multiple network sounders. To verify the feature has been enabled, go to **Settings > Echo**. There should be a menu item called **“Use depth & temp data from”** as shown below.



For More Information:

U.S. Based Resellers Technical and Order Support: (800) 324-4737

Canada Based Resellers Technical Support: (855) 361-1564

You may also send any inquiries via email to the addresses listed below, according to your sales-group classification:

- OEM/Boatbuilder – oem-bb@navico.com
- International/Latin America – international@navico.com
- National Retail – retail@navico.com
- Dealers/Distributors – orders@navico.com