

Sales Bulletin

LOWRANCE

SIMRAD

B&G

No.340 / February 8, 2017

C-MAP-Lake Insight PRO Map Integration Nearing Completion

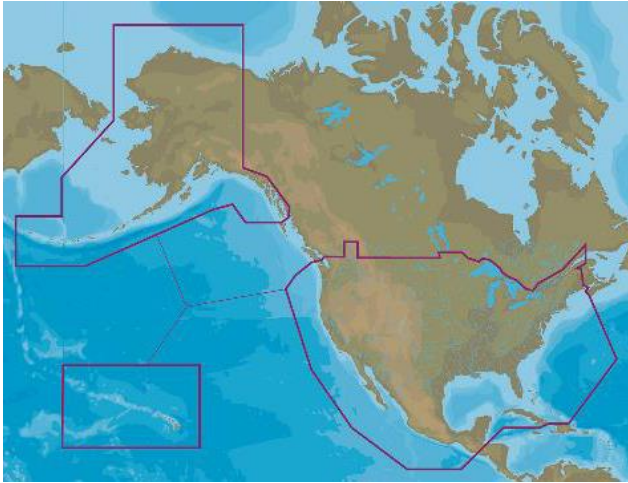
We are pleased to announce that new C-MAP Lake Insight PRO chart cards featuring complete coverage of US inland and coastal areas on a single microSD card are scheduled to start shipping with Lowrance®, Simrad® and B&G® C-MAP Insight PRO Bundles this month.

Currently, C-MAP Insight PRO bundles are shipping with two cards — a Lake Insight PRO v16 card and a C-MAP US Coastal Card (NA-Y036 US COASTAL AND RIVERS CONTINENTAL) — to ensure boaters receive complete inland and coastal coverage.

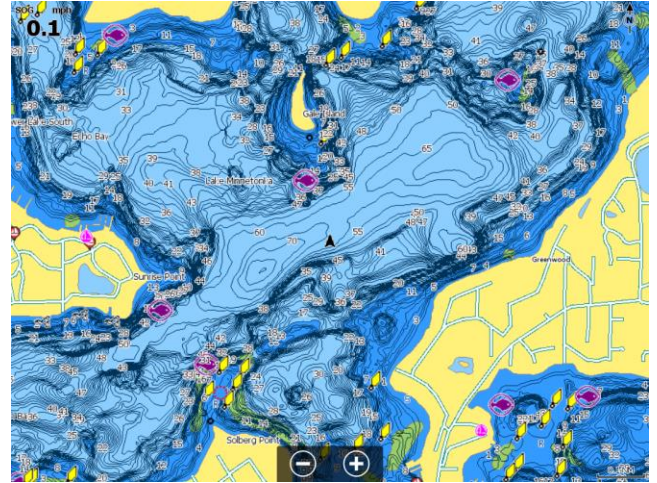
When the C-MAP-Lake Insight cartography integration is complete, the new chart card (985-11358-001 C-MAP MAX-N INSIGHT CONT US BUNDLE CARD) will be added to the bundles listed below with no changes to the SKUs or existing orders.

Lowrance C-MAP Insight Bundles	
000-13718-005	ELITE-12 TI TOTALSCAN C-MAP INSIGHT PRO
000-13274-005	ELITE-9 TI TOTALSCAN C-MAP INSIGHT PRO
000-12419-005	ELITE-7 TI TOTALSCAN C-MAP INSIGHT PRO
000-12423-005	ELITE-5 TI TOTALSCAN C-MAP INSIGHT PRO
000-12664-005	HOOK-7 M/H/DSI C-MAP INSIGHT PRO
000-12656-005	HOOK-5 M/H/DSI C-MAP INSIGHT PRO
000-12647-005	HOOK-4 MID/HIGH/DSI C-MAP INSIGHT PRO
Simrad C-MAP Insight Bundles	
000-13212-008	GO9 XSE TOTALSCAN, CONT US C-MAP MAXN
B&G C-MAP Insight Bundles	
000-13214-008	VULCAN 9 FS, CONT US C-MAP MAXN

NEW C-MAP MAX-N INSIGHT CONT US BUNDLE CARD (Single card)



C-MAP MAX-N Insight Cont US Coverage



Sample image of Lake Minnetonka

The new C-MAP MAX-N INSIGHT CONT US BUNDLE CARD combines all of the data from Lake Insight PRO charts with the C-MAP inland and coastal chart data that boaters have relied on for many years.

Key Features

- Covers all inland and coastal waters for continental US
- High-definition contours for thousands of lakes
- Fishing HotSpots® POIs and lake-specific fishing tips and techniques
- NEW Harbor charts & Port Info
- NEW state fish and wildlife regulations/records
- NEW Active Captain crowd-sourced POIs
- No Downloads Required
- Free updates from the Insight Genesis Social Map

For More Information:

U.S. Based Resellers Technical and Order Support: (800) 324-4737
Canada Based Resellers Technical Support: (855) 361-1564

You may also send any inquiries via email to the addresses listed below, according to your sales-group classification:

- OEM/Boatbuilder – oem-bb@navico.com
- International/Latin America – international@navico.com
- National Retail – retail@navico.com
- Dealers/Distributors – orders@navico.com