

TB-106514 / March 14, 2018

---

## Lowrance Software Release (18.1)

|  |                                  |
|--|----------------------------------|
| <b>Product:</b>                          | HDS Carbon / HDS Gen3 / Elite Ti |
| <b>Product Description:</b>              | All sizes                        |
| <b>Software Version:</b>                 | 59.1.72                          |
| <b>Effective Date:</b>                   | March 14, 2018                   |
| <b>Inspect/Update Current Inventory:</b> | Soft Hold in Navico LCs          |

| Product Family  | HDS Carbon | HDS Gen3 | Elite Ti |
|---|------------|----------|----------|
| Version Number  | 4.0        | 7.0      | 5.0      |
| Fish Reveal®  | ✓          | ✓        | ✓        |
| High-Visibility SideScan/DownScan                         | ✓          |          |          |
| C-MAP® Easy Routing + Navionics® Dock-to-Dock Autorouting | ✓*         | ✓*       | ✓        |
| C-MAP Navigation Palette                                  | ✓          | ✓        | ✓        |

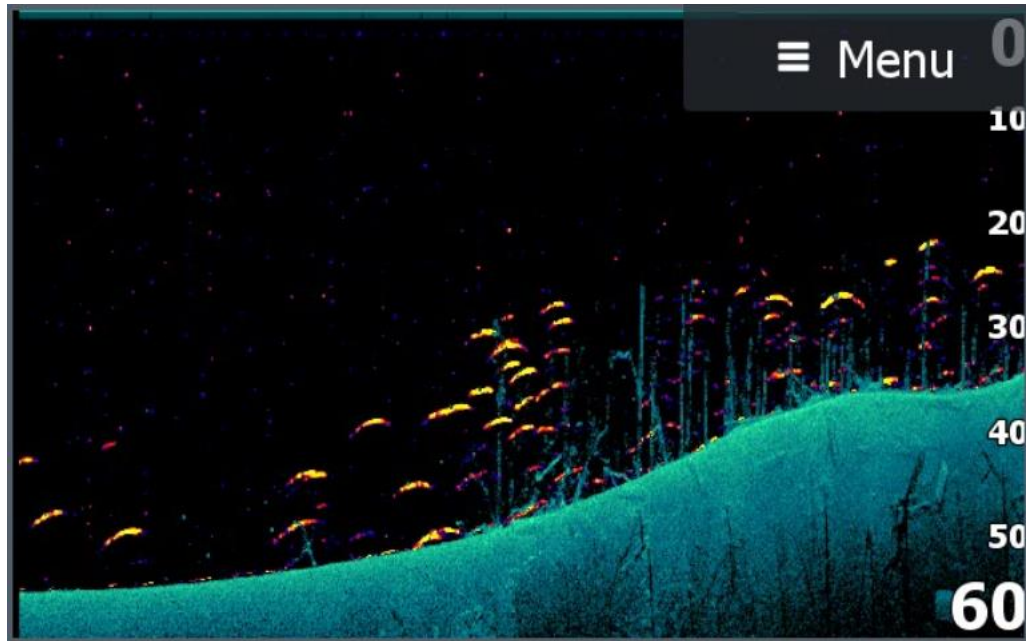
(✓\*) Feature previously only available on HDS Carbon and HDS Gen3 units sold outside of the U.S.

---

## Big Sonar Upgrade for Lowrance® Displays

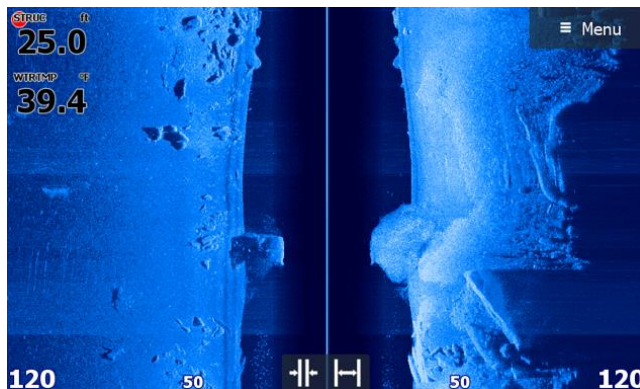
We are pleased to announce the release of new Lowrance software for HDS Carbon™, HDS Gen3 and Elite Ti displays. The new software will help anglers find fish easier and faster, see bottom structure in even greater detail, and enjoy simpler navigation.

- **New, FishReveal™ Smart Target Viewing** – a massive leap forward in fish-finding technology, FishReveal makes fish easier to see on DownScan Imaging™ by combining crystal-clear CHIRP sonar fish targets with superior, high-resolution views of bottom detail, structure and bait fish. Unlike traditional CHIRP views that provide strong fish targets but lack refined structure detail, or DownScan Imaging that provides photo-like images of bottom and structure details but show fish targets as tiny dots; FishReveal™ smart target viewing blends the best data from both technologies, eliminating the need for split-screen viewing and interpretation.

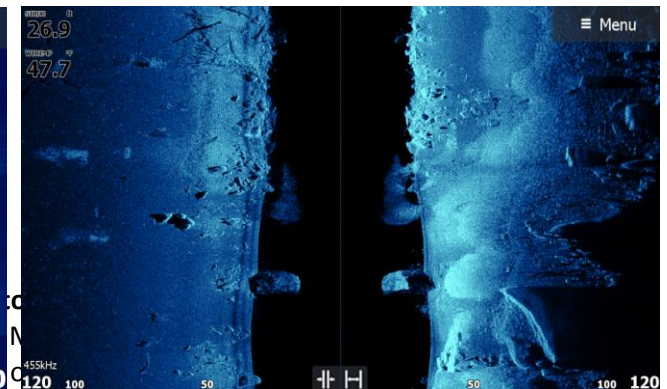


FishReveal

- New, High-Visibility Color Scheme (HDS Carbon only)** - dynamic color range and tone strength result in high-visibility contrast never before seen in scanning fish finders. A wider range of color enhances the near-photographic image of SideScan, DownScan Imaging™, TotalScan™ and StructureScan® HD/3D. Just as the human eye compensates for varying degrees of darkness, High-Visibility Color automatically enhances brightness in darker areas, while simultaneously preventing overexposure in brighter areas. This extends the visible range, making it possible to see what is in the shadows close to the boat or more than 100 feet away. Nine new color schemes display refined detail showing more fish, more bait schools, improved structure features and dramatic bottom definition.



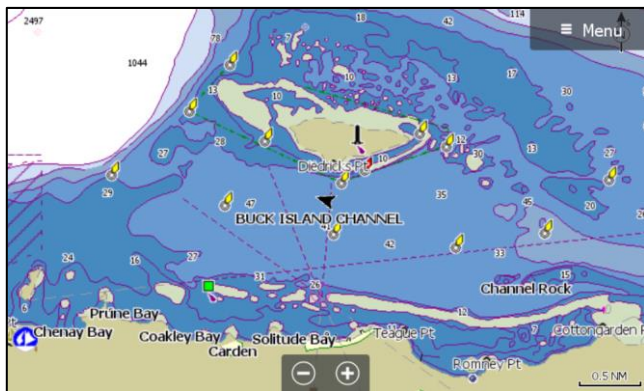
Previous SideScan Image



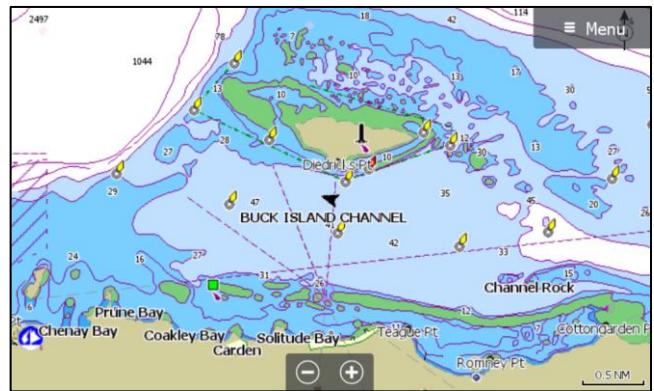
New, High-Visibility SideScan Image

route around a landmass, shoals and other fixed navigational hazards. Feature requires C-MAP MAX-N+ charts or Navionics+ or Navionics Platinum charts.

- **New, C-MAP Navigation Palette** – Get faster and easier navigation with automatic route planning. This feature simplifies route creation by automatically plotting the shortest and safest course based on the boat's draft, beam and height – creating a route around a landmass, shoals and other fixed navigational hazards. Autorouting requires a C-MAP MAX-N+, Navionics+ or Navionics Platinum chart.



Previous Default Paper Chart



New C-MAP Navigation Palette

- **Easier Software Downloads** – As of this release, we will no longer be using compressed .zip file downloads, and will begin using downloads in the native Lowrance .upd file format. This will make the upgrade process easier by allowing customers to download the software upgrade file directly to a SD card.

#### For More Information:

U.S. Based Resellers Technical and Order Support: (800) 324-4737

Canada Based Resellers Technical Support: (855) 361-1564

You may also send any inquiries via email to the addresses listed below, according to your sales-group classification:

- OEM/Boatbuilder – [oem-bb@navico.com](mailto:oem-bb@navico.com)
- International/Latin America – [international@navico.com](mailto:international@navico.com)
- National Retail – [retail@navico.com](mailto:retail@navico.com)
- DDI (Dealers/Distributors/Indirect) – [orders@navico.com](mailto:orders@navico.com)