

TB-91624 / April 26, 2017

Software Update: S2009 & S2016

| | |
|--|-------------------------------|
| Product: | 000-12185-001 & 000-12187-001 |
| Product Description: | S2009 & S2016 |
| Software Version: | V1.2.0 – 56.3.18 |
| Effective Date: | 1 March 2017 |
| Inspect/Update Current Inventory: | Yes |

We are pleased to announce the release of the latest software update for Simrad® S2009 and S2016 fish finder displays. This release incorporates some excellent new features, improvements and some minor bug fixes.

The software can be downloaded from www.simrad-yachting.com and www.navico-commercial.com

Features and Improvements

Multiple Sonar Support

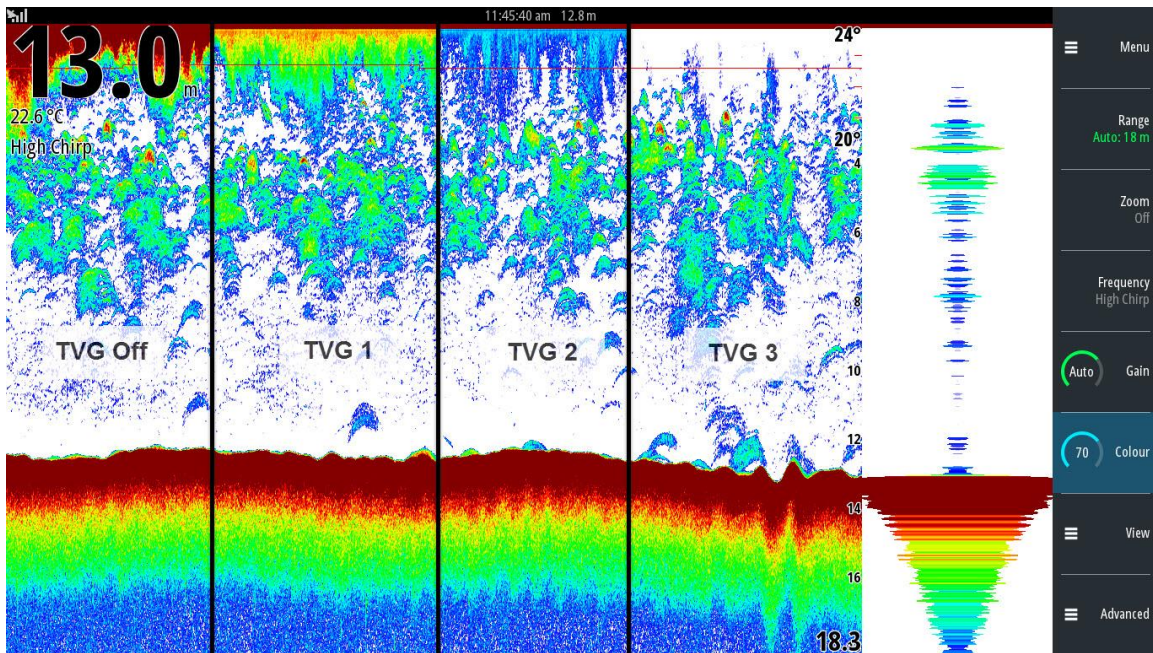
- Provides multiple sonar support in networked systems. Previously, only one echosounder source could be viewed on the network at any one time. The new software allows users to view and control two separate sources from the one display*.
- Allows the connection of the new S5100 high-performance CHIRP sonar module or connection to NSS evo2 and NSO evo2 displays as a primary or secondary echosounder source.
- The S2009 or S2016 can also be selected as an echosounder source when connected to an NSS evo2 or NSO evo2 display.

****Important. Multiple sonar support requires that any connected MFD's SonarHub™ or StructureScan® 3D be updated to the latest software (NOS 56.1.142). This software is available from the downloads page on the Simrad-Yachting website.***

Multiple sonar sources are not supported if a BSM1, BSM2, BSM3 or NSE, NSS Sport or NSO1 MFDs are on the network.

Auto Gain and TVG Sonar improvements

- The Auto Gain calculation changes will now control display noise speckle over a wider range of transducer installations and vessel speeds.
- The TVG control now adapts on a ping-by-ping basis to feather the surface clutter into the water column without displaying any visible banding. The TVG now has 4 levels of control:
 - Off – No TVG attenuation of the sonar ping. All information is shown.
 - TVG1 – Significant reduction in surface clutter, but clutter ‘speckle’ will still show through near the surface.
 - TVG2 – Further attenuation of surface clutter. Some speckle will be seen and fish targets will still appear near the surface.
 - TVG3 – Very minor speckle should be seen near the surface. Significant fish targets will appear near the surface but smaller bait fish are likely to be filtered out.

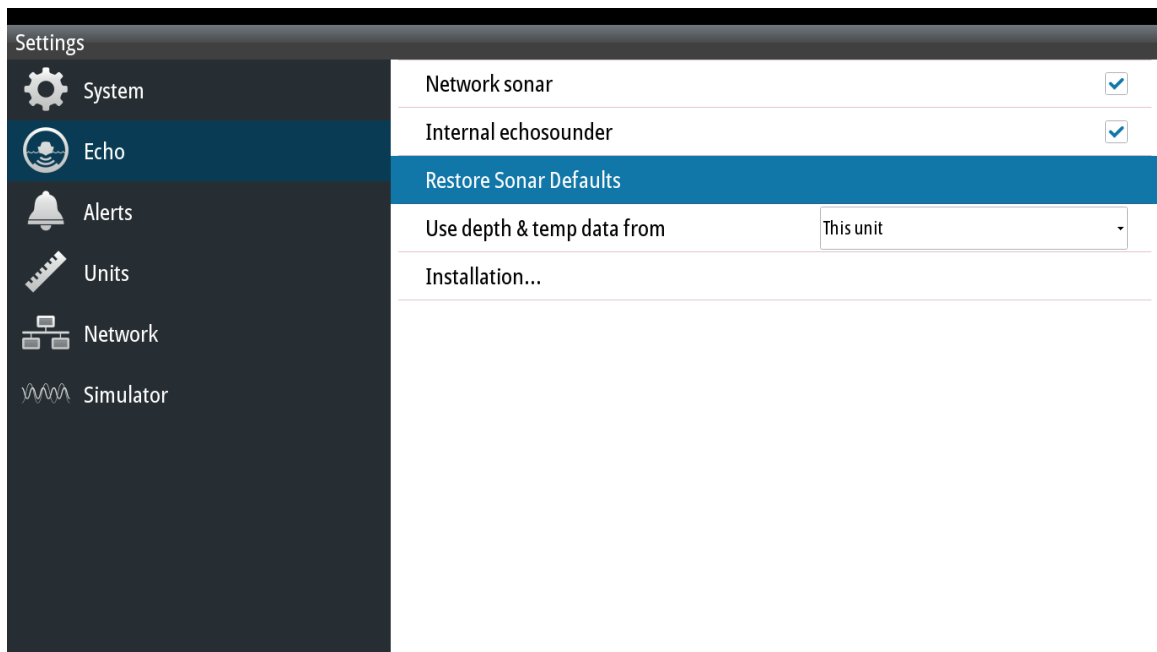


Showing TVG selection from Off to 3

To upgrade the software:

1. Download the software file from www.simrad-yachting.com.

2. Copy the file into the root directory of a SD Card (do not place the file into a folder on the card).
3. With the S2009 OR S2016 turned off, insert the SD card into the card reader of the unit.
4. Turn on the fishfinder and the update will be automatically applied.
5. Once the software has been applied, restore sonar defaults (Menu > Settings > Echo > Restore sonar defaults > press the tick key or the rotary dial to select).
6. After sonar defaults have been restored, remove the SD card and cycle power.



Known Bugs

Occasionally when operating in frequency split mode the ping speed is shown incorrectly after changing between windows. This, however, does not affect the actual ping speed selection.

For More Information:

U.S. Based Resellers Technical and Order Support: (800) 324-4737
 Canada Based Resellers Technical Support: (855) 361-1564

You may also send any inquiries via email to the addresses listed below, according to your sales-group classification:

- OEM/Boatbuilder – oem-bb@navico.com
- International/Latin America – international@navico.com
- National Retail – retail@navico.com

- Dealers/Distributors – orders@navico.com